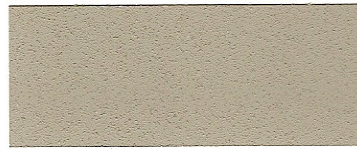


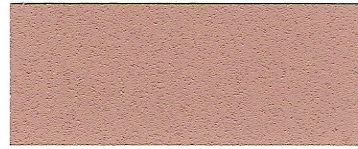
RB2199 Tile Red 1/2%



BO7489 Harvest Gold 3/4%



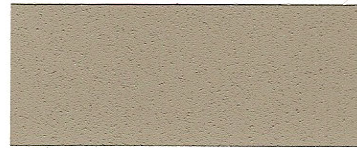
GO4104 Slate Green 1-1/2%



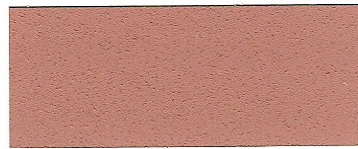
RB2199 Tile Red 1%



BO7489 Harvest Gold 1-1/2%



GO4104 Slate Green 3%



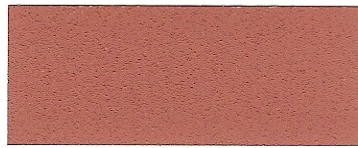
RB2199 Tile Red 2%



BO7489 Harvest Gold 3%



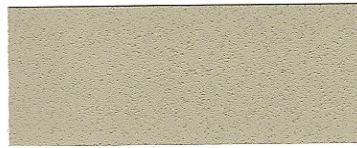
GO4104 Slate Green 6%



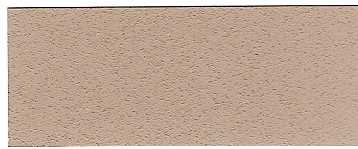
RB2199 Tile Red 4%



BO7489 Harvest Gold 6%



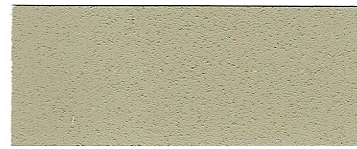
GO4099 Fern Green 1-1/2%



BO4359 Buckskin 1/2%



*SC1045 SuperJet Black 1/4%



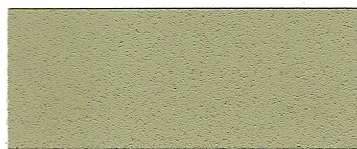
GO4099 Fern Green 3%



BO4359 Buckskin 1%



*SC1045 SuperJet Black 1/2%



GO4099 Fern Green 6%



BO4359 Buckskin 1-1/2%



*SC1045 SuperJet Black 1%



BO4359 Buckskin 3%



*SC1045 SuperJet Black 1-1/2%



BO4359 Buckskin 6%



*SC1045 SuperJet Black 2%

Disclaimer: These color chips are based on % of dry pigment per cementitious materials (i.e. 3% loading in 1 yard with a 6 sack or 564 pound/yard mix design would equal 17 dry pounds of pigment per yard). A Type 1 medium grey cement and light tan sand in a 4-5" slump and a broom finish were used. Variations in cement, aggregates, admixtures, water, processing, finishing, and curing could yield different results. *NOTE: If using SuperJet Carbon Black (SC1045, liquid only), please refer to the special note under INGREDIENTS.

ELEMENTIS

PIGMENTS